

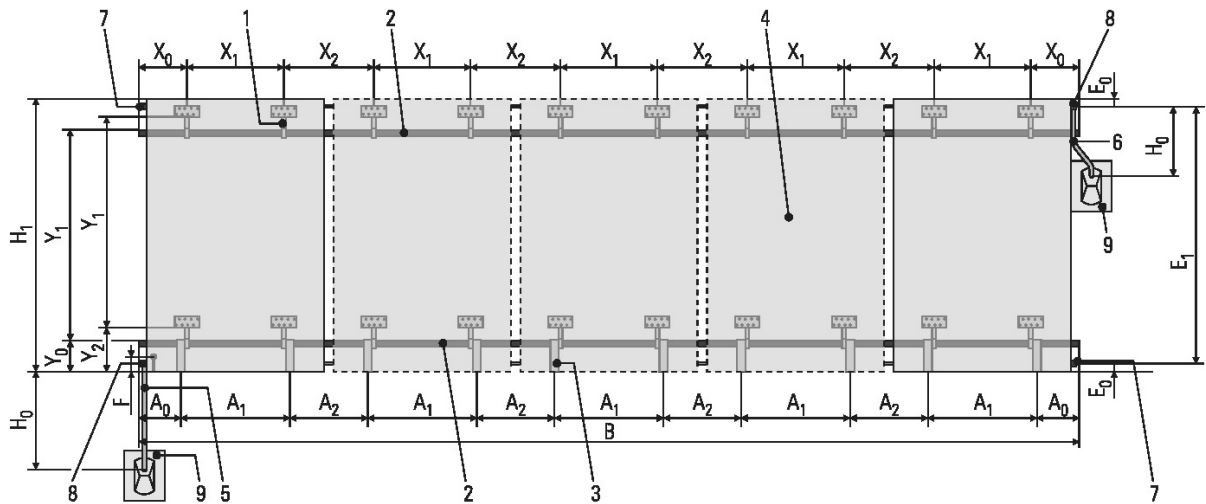


EKS(H-V)-P

Main dimensions of the Solar system solar panel in Solar panels on-roof installation

Measuring point	Number of collectors		1	2	3	4	5
	Type	Dim.	Dimensions in mm				
Solar panel array width (length mounting profile rail)	EKSV21P	b	1038	2076	3114	4152	5190
	EKSV26P		1332	2664	3996	5328	6660
	EKSH26P		2032	4064	6096	8128	10160
Distance from roof penetration box		H_0	300 to 700				
Height of solar panel array	EKSV21P	H_1	2000				
	EKSV26P		2000				
	EKSH26P		1300				
Distance from lower collector edge to lower mounting rail		Y_0	200				
Spacing of the mounting rails	EKSV21P	Y_1	1400 to 1600				
	EKSV26P		1400 to 1600				
	EKSH26P		800 to 1000				
Distance from lower collector edge to lower edge of the perforated plate of roof mounting bracket		Y_2	235 to 270				
Maximum distance solar panel edge - first on-roof roof hooks		X_0	400				
Spacing of the roof mounting brackets of a flat solar panel	EKSV21P	X_1	400 to 800				
	EKSV26P		500 to 1100				
	EKSH26P		1000 to 1800				
Spacing of roof mounting brackets between two flat solar panels		X_2	230 to 630				
Distance from solar panel edge - first solar panel securing hook		A_0	120 to 220				
Spacing of the roof mounting brackets of a flat solar panel	EKSV21P	A_1	600 to 880				
	EKSV26P		900 to 1100				
	EKSH26P		1600 to 1800				
Spacing of solar panel mounting brackets between two flat solar panels		A_2	240 to 440				
Distance of edge of solar panel to hydraulic connection		E_0	approx. 73				
Center-to-center distance of the solar panel couplings	EKSV21P	E_1	1854				
	EKSV26P		1854				
	EKSH26P		1154				
Distance from solar panel temperature sensor to:	 bottom edge of solar panel	f	172				
	 top edge of solar panel						

Tab. 2: Main dimensions of the Solar system solar panel in Solar panels on-roof installation



Main dimensions of the Solar system solar panel in Solar panels on-roof installation (shown on the flat solar panel EKSV26P in the drain-back system)

Key see fig. 2
Dimensions see tab 2