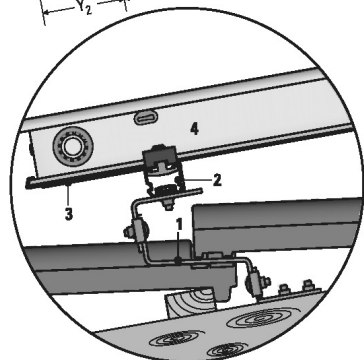
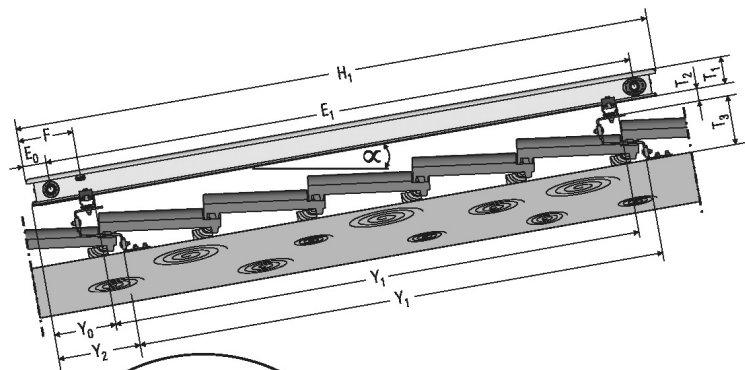
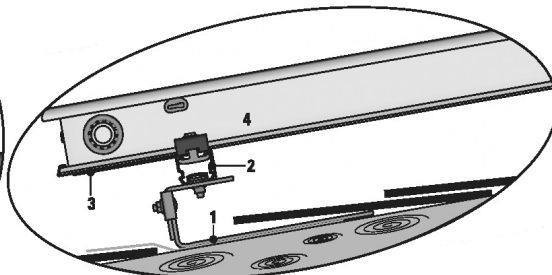


EKS(H-V)-P



Roof tile



Roof slate

- 1 Roof mounting bracket
- 2 Mounting rail
- 3 Collector securing hook
- 4 Flat solar panel EKS26P
- 5 Return flow connection
- 6 Infeed connection
- 7 Solar panel isolating plug
- 8 Solar panel connection elbow
- 9 Universal roof penetration boxes

- α Inclination angle (permissible from 15° to 80°)
- T1 Solar panel height = 85 mm
- T2 Height of mounting profile rail = 37 mm
- T3 Height adjustment range of the on-roof securing hook:
 FIX-ADP: 131 to 173 mm
 FIX-ADS: 78 to 108 mm

Other dimensions see tab. 2

Fig. 2: Side view of an on-roof flat solar collector (shown on a flat collector EKS26P in the drain-back system)